

BEFORE THE ILLINOIS POLLUTION CONTROL BOARD

Sugar River Genetics, LLC)
(Property Identification Number) PCB No. 21-____
09-09-200-003) (Tax Certification)
)

NOTICE OF FILING

TO: See attached Certificate of Service.

PLEASE TAKE NOTICE that I have today electronically filed with the Office of the Clerk of the Illinois Pollution Control Board Illinois EPA's NOTICE OF FILING, APPEARANCE, RECOMMENDATION, and CERTIFICATE OF SERVICE, copies of which are herewith served upon you.

Respectfully submitted,

ILLINOIS ENVIRONMENTAL
PROTECTION AGENCY

By: /s/ Gabriel H. Neibergall
Gabriel H. Neibergall
Assistant Counsel
Division of Legal Counsel
Gabriel.Neibergall@illinois.gov

DATED: February 26, 2021

1021 N. Grand Ave. East
P.O. Box 19276
Springfield, IL 62794-9276
(217) 782-5544

BEFORE THE ILLINOIS POLLUTION CONTROL BOARD

Sugar River Genetics, LLC)
(Property Identification Number) PCB No. 21-_____
09-09-200-003) (Tax Certification)
)

APPEARANCE

The undersigned, as one of its attorneys, hereby enters an Appearance on behalf of the Illinois Environmental Protection Agency.

Respectfully submitted,

ILLINOIS ENVIRONMENTAL
PROTECTION AGENCY

By: /s/ Gabriel H. Neibergall
Gabriel H. Neibergall
Assistant Counsel
Division of Legal Counsel
Gabriel.Neibergall@illinois.gov

DATED: February 26, 2021

Gabriel H. Neibergall, #6323183
Division of Legal Counsel
Illinois Environmental Protection Agency
1021 N. Grand Ave. East
P.O. Box 19276
Springfield, IL 62794-9276
(217) 782-5544
Gabriel.Neibergall@illinois.gov

BEFORE THE ILLINOIS POLLUTION CONTROL BOARD

Sugar River Genetics, LLC)	
(Property Identification Number)	PCB No. 21-_____
09-09-200-003))	(Tax Certification)
)	

RECOMMENDATION

The Illinois Environmental Protection Agency (“Illinois EPA”) hereby files its Recommendation pursuant to Section 125.204 of the regulations of the Illinois Pollution Control Board (“Board”), 35 Ill. Adm. Code 125.204.

1. On June 8, 2020, the Illinois EPA received a request from Sugar River Genetics, LLC (log number TC-142737, **Exhibit A**) for an Illinois EPA recommendation regarding the tax certification of water pollution control facilities pursuant to 35 Ill. Adm. Code 125.204.
2. The facility’s address is:

Sugar River Genetics, LLC
7426 Barningham Road
Pecatonica, IL 61063

The proposed water pollution control facilities in this request are located in Section 9, T27N, R10E of the 4th P.M. in Winnebago County, at the above street address and consist of the following:

One (1) concrete livestock waste pit, within the new gestation barn, measuring 200 ft. (length) x 156.5 ft. (width) x 12 ft. (depth), the four (4) attached pump out pits (each approximately 6 ft. x 6 ft. x 12 ft. deep), and the 1,252 slatted flooring units used to cover the waste pits.

Within the new farrowing barn, forty-four (44) concrete livestock waste pits measuring 82.5 ft. (length) x 6.7 ft. (width) x 2 ft. (depth); six (6) concrete waste pits measuring 82.5 ft. (length) x 9.1 ft. (width) x 2 ft. (depth); and the 128 slatted flooring units used to cover the waste pits.

One (1) concrete livestock waste pit, within the old gestation barn no. 1, measuring 435 ft. (length) x 41.1 ft. (width) x 6 ft. (depth), the eight (8)

attached pump out pits (each approximately 4 ft. x 4 ft. x 6 ft. deep), and the 340 slatted flooring units used to cover the waste pits.

One (1) concrete livestock waste pit, within the old gestation barn no. 2, measuring 435 ft. (length) x 41.1 ft. (width) x 6 ft. (depth), the seven (7) attached pump out pits (each approximately 4 ft. x 4 ft. x 6 ft. deep), and the 340 slatted flooring units used to cover the waste pits.

One (1) concrete livestock waste pit, within the gilt developer barn, measuring 364 ft. (length) x 36 ft. (width) x 6 ft. (depth), the seven (7) attached pump out pits (each approximately 4 ft. x 4 ft. x 6 ft. deep), and the 340 slatted flooring units used to cover the waste pits.

These livestock waste management facilities are used to collect, transport, and/or store livestock waste prior to cropland application, and are further described in Exhibit A.

3. Section 11-10 of the Property Tax Code, 35 ILCS 200/11-10 (2018), and Section 125.200(a) of the Board's regulations, 35 Ill. Adm. Code 125.200(a), define "pollution control facilities" as:

any system, method, construction, device or appliance appurtenant thereto or any portion of any building or equipment, that is designed, constructed, installed or operated for the primary purpose of: eliminating, preventing, or reducing air or water pollution ...or treating, pretreating, modifying or disposing of any potential solid, liquid or gaseous pollutant which if released without treatment, pretreatment modification or disposal might be harmful, detrimental or offensive to human, plant or animal life, or to property.

4. In order to receive preferential tax treatment as pursuant to 35 ILCS 200/11-5 (2018), pollution control facilities must be certified as such by the Board, 35 ILCS 200/11-20 (2018) and 35 Ill. Adm. Code 125.200(a).
5. Upon receipt of a tax certification application, the Illinois EPA must file a recommendation on the application with the Board, 35 Ill Adm. Code 125.204(a).
6. Based on the information in the application and the purpose of the facility, it is the Illinois EPA's engineering judgment that the described facilities may be considered "pollution

control facilities,” pursuant to 35 Ill. Adm. Code 125.200(a), with the primary purpose of eliminating, preventing, or reducing water pollution, or as otherwise provided in 35 Ill. Adm. Code 125.200, and are eligible for tax certification from the Board.

WHEREFORE, the Illinois EPA recommends that the Board issue the requested tax certification.

Respectfully submitted,

ILLINOIS ENVIRONMENTAL
PROTECTION AGENCY

By: /s/ Gabriel H. Neibergall
Gabriel H. Neibergall
Assistant Counsel
Division of Legal Counsel
Gabriel.Neibergall@illinois.gov

DATED: February 26, 2021

Gabriel H. Neibergall, #6323183
Division of Legal Counsel
Illinois Environmental Protection Agency
1021 N. Grand Ave. East
P.O. Box 19276
Springfield, IL 62794-9276
(217) 782-5544
Gabriel.Neibergall@illinois.gov



ILLINOIS ENVIRONMENTAL PROTECTION AGENCY

1021 NORTH GRAND AVENUE EAST, P.O. BOX 19276, SPRINGFIELD, ILLINOIS 62794-9276 • (217) 782-3397

JB PRITZKER, GOVERNOR

JOHN J. KIM, DIRECTOR

Memorandum

To: Mike Roubitchek, Division of Legal Counsel

From: Darin E. LeCrone, P.E., Manager, Industrial Unit, Permit Section, Division of Water Pollution Control DEL

Date: OCT 21 2020

Re: Sugar River Genetics, LLC - Pecatonica
Recommendation of Tax Certification
Log No.: TC-142737
BOW ID No.: W2018070010
Property Index Number: 0909200003

The Bureau of Water received a request on June 8, 2020 from Sugar River Genetics, LLC, having a principal place of business at 303 N. 2nd St., Carthage, IL 62321, for an Illinois EPA recommendation regarding the tax certification of water pollution control facilities pursuant to 35 Il. Adm. Code 125.204. We offer the following recommendation.

The water pollution control facilities in this request include the following:

Sugar River Genetics, LLC
7426 Barningham Road
Pecatonica, IL 61063

Section 9, Township 27-North, Range 10-East of the East 4th PM in Winnebago County.

Livestock waste management facilities consisting of:

One (1) concrete livestock waste pit, within the new gestation barn, measuring 200 ft. (length) x 156.5 ft. (width) x 12 ft. (depth), the four attached pump out pits measuring 6 ft. (length) x 6 ft. (width) x 12 ft. (depth) and the 1,252 slatted flooring units used to cover this pit.

Within the new farrowing barn, forty-four (44) concrete livestock waste pits measuring 82.5 ft. (length) x 6.7 ft. (width) x 2 ft. (depth) and six (6) concrete livestock waste pits measuring 82.5 ft. (length) x 9.1 ft. (width) x 2 ft. (depth) and the 128 slatted flooring units covering these pits.

One (1) concrete livestock waste pit, within the old gestation barn no. 1, measuring 435 ft. (length) x 41.1 ft. (width) x 6 ft. (depth), the eight (8) attached pump out pits measuring 4 ft. (length) x 4 ft. (width) x 6 ft. (depth) and the 340 slatted flooring units used to cover this pit.

One (1) concrete livestock waste pit, within the old gestation barn no. 2, measuring 435 ft. (length) x 41.1 ft. (width) x 6 ft. (depth), the seven (7) attached pump out pits measuring 4 ft. (length) x 4 ft. (width) x 6 ft. (depth) and the 340 slatted flooring units used to cover this pit.

One (1) concrete livestock waste pit, within the gilt developer barn, measuring 364 ft. (length) x 36 ft. (width) x 6 ft. (depth), the seven (7) attached pump out pits measuring 4 ft. (length) x 4 ft. (width) x 6 ft. (depth) and the 340 slatted flooring units used to cover this pit.

Page No. 2

Tax Certification Recommendation

Log No. TC-142737

These livestock waste management facilities are used to collect, transport and/or store livestock wastes prior to cropland application.

These facilities are further described in the enclosed applications and supporting documents.

Based on the information included in this submittal, it is our engineering judgment that the above proposed facilities may be considered "Pollution Control Facilities" under 35 IAC 125.200(a), with the primary purpose of eliminating, preventing, or reducing water pollution, or as otherwise provided in this section, and therefore eligible for tax certification from the Illinois Pollution Control Board. The Bureau of Water therefore recommends that the Board issue the requested tax certification for these facilities.

If you have any questions regarding the above, please contact Darren Gove at 217/782-0610.

DRG:TC-142737_Tax Cert Recommendation_08Jun20.docx

cc: Tax Cert File

Illinois EPA - Bureau of Water - Division of Pollution Control
Title 35 Subtitle A Part 125 Tax Certifications
Illinois EPA Review Notes for:
Agency Recommendation of Pollution Control Facilities.

BOW ID #: W2018070010

Project Name: Sugar River Genetics, LLC

Date application received: 6/8/2020

Reviewer: DRG

Log number: TC-142737

Legal Description:
Section 9 Twp: 27-North Range: 10-East PM: East
4th

County: Winnebago

Facility Contact:

Phone: _309-333-2716

Pollution Control Facility Type:
Swine Livestock Waste Management Facility

Property ID: 0909200003

Applicant: Sugar River Genetics, LLC
303 N. 2nd St.
Carthage, IL 62321

Facility: Sugar River Genetics, LLC
7426 Barningham Road
Pecatonica, IL 61063

Date Control Devices installed: 6/1/2017

Application Signature by: Gary Donley

Title: Owner

Contents of Application: Old 2 page form, additional sheet for Section 1 "Background and Site Information", Additional sheet with sampling data.

Is there a pollutant control flow diagram? **Yes**

Is there sufficient diagrams showing the pollution control facilities? **Yes**

This facility generates the following pollutants and prevents their discharge as indicated:
Livestock waste is collected and land applied to cropland.

Physical description of pollution control facilities that ARE recommended:

Livestock waste management facilities consisting of:

One (1) concrete livestock waste pit, within the new gestation barn, measuring 200 ft. (length) x 156.5 ft. (width) x 12 ft. (depth), the four attached pump out pits measuring 6 ft. (length) x 6 ft. (width) x 12 ft. (depth) and the 1,252 slatted flooring units used to cover this pit.

Within the new farrowing barn, forty-four (44) concrete livestock waste pits measuring 82.5 ft. (length) x 6.7 ft. (width) x 2 ft. (depth) and six (6) concrete livestock waste pits measuring 82.5 ft. (length) x 9.1 ft. (width) x 2 ft. (depth) and the 128 slatted flooring units covering these pits.

One (1) concrete livestock waste pit, within the old gestation barn no. 1, measuring 435 ft. (length) x 41.1 ft. (width) x 6 ft. (depth), the eight (8) attached pump out pits measuring 4 ft. (length) x 4 ft. (width) x 6 ft. (depth) and the 340 slatted flooring units used to cover this pit.

Illinois EPA Log #: TC-142737

Page 2 of 2

One (1) concrete livestock waste pit, within the old gestation barn no. 2, measuring 435 ft. (length) x 41.1 ft. (width) x 6 ft. (depth), the seven (7) attached pump out pits measuring 4 ft. (length) x 4 ft. (width) x 6 ft. (depth) and the 340 slatted flooring units used to cover this pit.

One (1) concrete livestock waste pit, within the gilt developer barn, measuring 364 ft. (length) x 36 ft. (width) x 6 ft. (depth), the seven (7) attached pump out pits measuring 4 ft. (length) x 4 ft. (width) x 6 ft. (depth) and the 340 slatted flooring units used to cover this pit.

These livestock waste management facilities are used to collect, transport and/or store livestock wastes prior to cropland application.

Sent review letter on 7/21/2020.

Notes:

[9/10/2020 : Received Revised figure 1

9/10/2020 : called Henry Wilson to let him know about the dimension discrepancy, he will send the revised to me

8/31/2020 : received response to review letter

7/30/2020 : granted extension till 8/31/2020

7/30/2020 : responded to email from Cassie Grotts about my letter

7/21/2020 : Sent a review letter, also waiting on a response from Mike R. about separating applications for diff PINs

Nothing follows – DRG - (September 10, 2020)

Gove, Darren

From: Henry Wilson <hwilson@hogvet.com>
Sent: Thursday, September 10, 2020 10:59 AM
To: Gove, Darren
Subject: [External] Sugar River revised
Attachments: Fig 1 (revised HMW).pdf

Darren,

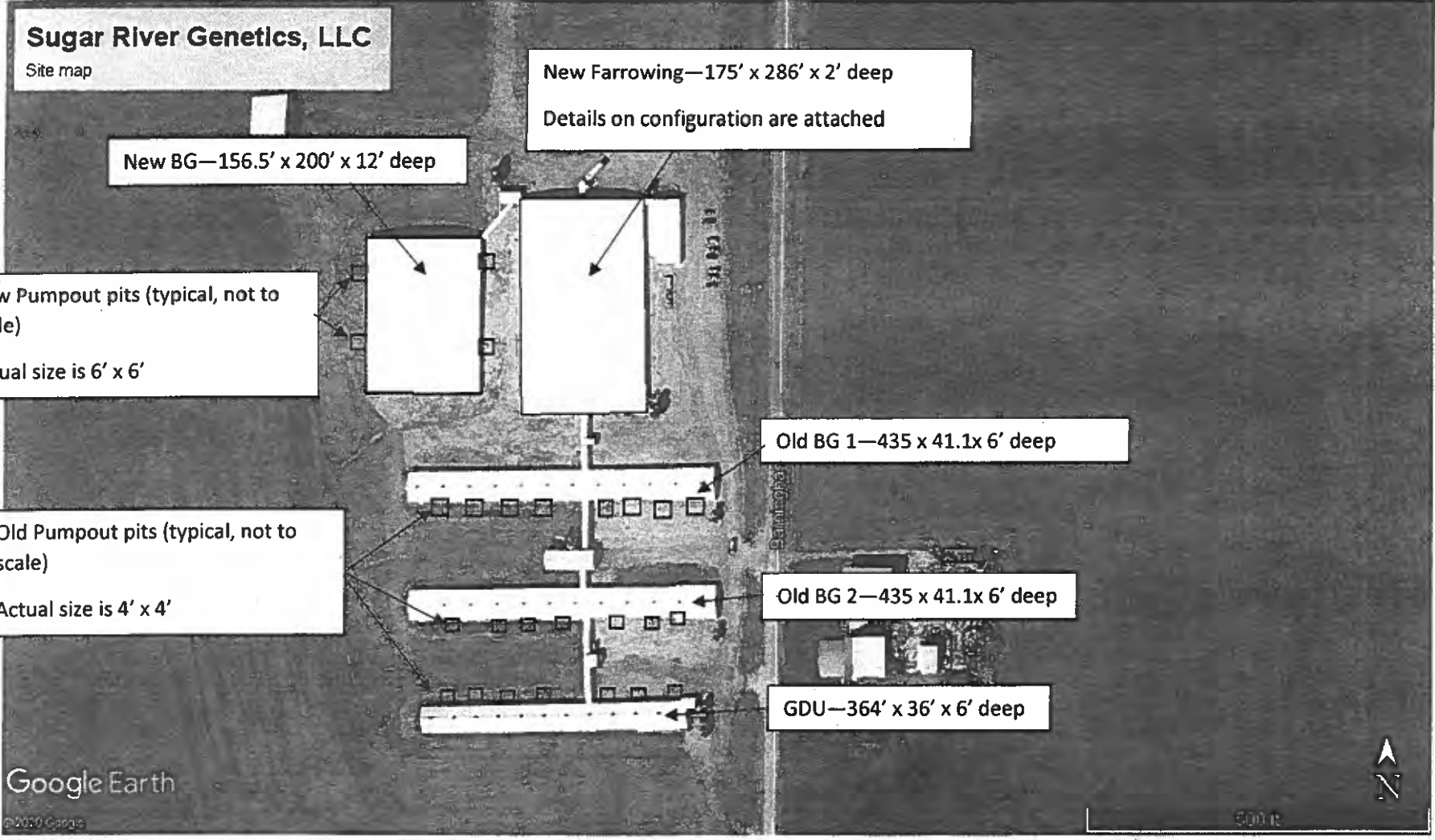
Here is the revised figure 1. Let me know if you need help with anything else. Thanks a lot.

Henry Wilson
Soil and Water Conservation Manager
Professional Swine Management, LLC
P.O. Box 220
Carthage IL 62321
217-357-2811 Phone
217-357-8344 Direct
309-333-2716 Cell

CONFIDENTIALITY NOTICE: The information contained in this communication, including attachments, may contain legally confidential, privileged or proprietary information and is intended only for the use of the intended recipient(s) named above. If the reader of this message is not the intended recipient, you are hereby notified that any dissemination, distribution, or copying of this communication, or any of its contents, is strictly prohibited. If you have received this communication in error, please return it to the sender immediately and delete the original message and any copies of it. If you have any questions concerning this message, please contact the sender.

CONFIDENTIALITY NOTICE: The information contained in this communication, including attachments, may contain legally confidential, privileged or proprietary information and is intended only for the use of the intended recipient(s) named above. If the reader of this message is not the intended recipient, you are hereby notified that any dissemination, distribution, or copying of this communication, or any of its contents, is strictly prohibited. If you have received this communication in error, please return it to the sender immediately and delete the original message and any copies of it. If you have any questions concerning this message, please contact the sender.

Electronic Filing: Received, Clerk's Office 2/26/2024 *PCB 2021-063**



REVIEW NOTES

Project Name Sugar River Genetics, LLC Project Location Pecatonica Cty Winnebago
Log No. TC-142737 Descr Livestock waste management facilities consisting of: Date 9/10/2020 Reviewer

RE: Amendment submittal Rec'd 8/31/20

Dimensions of named structures is inconsistent with original application.

Called Henry Wilson to get response

Response consisting of revised Figure No. 1 Rec'd via email

Per discussion with H. Wilson, the ^{revised} Dimensions he has provided in the Figure, are the Accurate Dimensions and the discrepancy is linked to changes in the facility and others preparing the original application.

- Revised Figure 1 Rec'd 9/10/20
- Table 1 + Table 2 Rec'd 8/31/20

Are used in development of this tax certification description.

Rec'd 8/31/20
via email

**CARTHAGE
SYSTEM**



PROFESSIONAL SWINE
MANAGEMENT, LLC

Ted Ufkes, COO

Julie Totten, CCO

Gary Donley, VP Finance

Shaun McGinn, Director of
Production Operations

Twyla Stevens, Director of
Human Resources

PROFESSIONAL SWINE MANAGEMENT, LLC

PO Box 220 • Carthage, IL 62321-0220

Ph: 217-357-8300 • Fax: 217-357-6665

www.psmswine.com

Illinois Environmental Protection Agency
1021 North Grand Avenue East
P.O. Box 19276
Springfield, IL 62794-9276

RE: Sugar River Genetics, LLC (Winnebago County)
Tax Certification Program for Livestock Waste Management Facilities
Log# TC-142737

To Whom it May Concern:

We received your request for more information regarding our application for tax certification of pollution control facilities. There were four areas identified that required more information to process our request. The responses follow.

1. A facility plan map diagram of the pollution control components is attached as Figure 1. Details of pump out pits and slatted flooring are quantified in detail in Table 1.
2. The Parcel Identification Number for the pollution control facility is: 0909200003.
3. The New Farrowing barn has collection pits underneath the farrowing crates and in the breeding room. The number of collection pits and the dimensions of those pits are outlined in Table 2.
4. The process flow diagram is attached as Figure 2.

Please consider this as a request for an extension and do not withdraw our application. Feel free to contact me if you have further questions.

Sincerely,

Henry Wilson
Soil and Water Conservation Manager
Professional Swine Management, LLC
PO Box 220
Carthage IL 62321
217-357-2811

See Revised

Figure 1.

Sugar River Genetics, LLC
Site map

New Farrowing—159' x 200' x 2' deep
Details on configuration are attached

New BG—175' x 286' x 12' deep

few Pumpout pits (typical, not to scale)
Actual size is 6' x 6'

Old Pumpout pits (typical, not to scale)
Actual size is 4' x 4'

Old BG 2—378' x 36' x 8' deep

Old BG 2—378' x 36' x 8' deep

GDU—378' x 36' x 8' deep

Google Earth
© 2020 Google

500 ft

Table 1. A summary of the number of slats and pump outs per barn at Sugar River Genetics, LLC

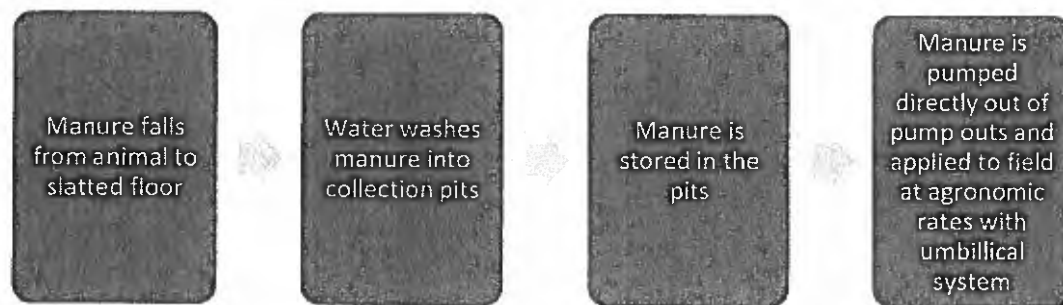
<u>Barn</u>	<u>Number of slats</u>	<u>Number of pump out pits</u>
New BG	1,252	4
New Farrowing	128	0
Old BG1	340	8
Old BG2	340	7
Gilt Developer	340	7

Table 2. A summary of the 2' Farrowing pits at Sugar River Genetics, LLC

Summary

Number of farrowing rooms in the farrowing barn	11
Rows of collection pit per room	4
Length of collection pit	82.5'
Width of collection pit	6.7'
Number of breeding rooms in the farrowing barn	1
Number of breeding room collection pits	6
Length of collection pit	82.5'
Width of collections pit	9.1'

Figure 2. Process flow diagram of Sugar River Genetics, LLC.



hwilson@hogvet.com



ILLINOIS ENVIRONMENTAL PROTECTION AGENCY

1021 NORTH GRAND AVENUE EAST, P.O. BOX 19276, SPRINGFIELD, ILLINOIS 62794-9276 • (217) 782-3397

JB PRITZKER, GOVERNOR

JOHN J. KIM, DIRECTOR

217/782-3362

JUL 21 2020

Gary Donley
Sugar River Genetics, LLC
303 N. 2nd St.
Carthage, IL 62321

Re: Sugar River Genetics, LLC (Winnebago County)
Tax Certification Program for Livestock Waste Management Facilities
Log # TC-142737

Dear Applicant:

We received your request for tax certification of pollution control facilities on June 8, 2020, this request was concerning the below ground steel reinforced concrete livestock manure storage structures under the four (5) identified swine barns near Pecatonica in Winnebago County. The documents, as submitted, have been reviewed, and based on that review, the following items are required for the Agency to process your request for Tax Certification.

1. Provide a facility plan diagram showing the requested pollution control components of the facility labeled to identify each structure and its stated dimensions. If attendant components of the waste storage structures such as pump out pits or slatted flooring are present, these items should be identified and quantified in detail on a revised pollution control facility narrative description.
2. Identify the appropriate Parcel Identification Number (PIN) for each of the requested pollution control facilities.
3. Please indicate for the structure identified as New Farrowing if the 2 foot deep pit is located below the entire barn footprint or if there more than 1 pit of different dimensions. Please note that only the collection pits located under the livestock operations qualify as pollution control facilities unless additional justification/explanation of how such non-pit areas have primary purposes to eliminate, prevent, or reduce water pollution.
4. Provide a combined or separate process flow diagram drawing for each requested pollution control facility in accordance with instructions for completing Section D of the applicable form for Tax Certification Program for Livestock Waste Management Facilities. An example process flow diagram has been provided for your convenience.

Upon receipt of a satisfactory written reply and supplemental information required, we shall finalize our review of this subject. Your response should be submitted to this office within thirty (30) days. If your response is not submitted to this office within thirty (30) days or a request for extension is not requested within this timeframe your request will be considered withdrawn.

Page No. 2
Log No. TC-142737

Should you have any questions or comments regarding the content of this letter, please contact me at 217/782-3362 or darren.gove@illinois.gov. Please include the above referenced log number (TC-142737) on all correspondence.

Sincerely,



Darren Gove
Environmental Protection Engineer
Division of Water Pollution Control, Permit Section
Illinois EPA

Enclosures (1)

cc: Records Unit

APPLICATION FOR CERTIFICATION (PROPERTY TAX TREATMENT)
 POLLUTION CONTROL FACILITY
 AIR WATER

TC-142737

ILLINOIS ENVIRONMENTAL PROTECTION AGENCY
 P. O. Box 19276, Springfield, IL 62794-9276

This Agency is authorized to request this information under Illinois Revised Statutes, 1979, Chapter, 120, Section 502a-5. Disclosure of this information is voluntary. However, failure to comply could prevent your application from being processed or could result in denial of your application for certification

6/8/20 FOR AGENCY USE

File No.	Professional Swine Management		Date Received	6/8/20	Certification No.		Date		
Sec. A APPLICANT	Company Name		Sugar River Genetics, LLC		Person to Contact for Additional Details		Gary Donley		
	Person Authorized to Receive Certification		Gary Donley 303 N. 2nd St		Street Address		P.O. Box 220		
	Street Address		P.O. Box 220		Municipality, State & Zip Code		Carthage, IL 62321		
	Municipality, State & Zip Code		Carthage, IL 62321		Telephone Number		217-357-2811		
	Telephone Number		217-357-2811		Location of Facility		See attached		
	Location of Facility		Quarter Section	Township	Range	Municipality	Township		
	Street Address		7426 Barningham Rd		Pecatonica IL County	Winnebago		Book Number	
	Property Identification Number		09-10-100-004 09-09-200-003		Parcel Number				
	09-09-100-005 09-09-200-006								
Sec. B MANUFACTURING OPERATIONS	Nature of Operations Conducted at the Above Location								
	Swine Production								
	Water Pollution Control Construction Permit No.				Date Issued				
	NPDES PERMIT No.				Date Issued		Expiration Date		
	Air Pollution Control Construction Permit No.				Date Issued				
Air Pollution Control Operating Permit No.				Date Issued					
Sec. C MANUFACTURING PROCESS	Describe Unit Process								
	Materials Used in Process								
Sec. D POLLUTION CONTROL FACILITY DESCRIPTION	Describe Pollution Abatement Control Facility								
Below ground re-enforced concrete structure for collecting and storing swine effluent until it can be spread on area crop ground									

RECEIVED
 JUN 03 2020

Sec. E	(1) Nature of Contaminants or Pollutants		
CONTAMINANTS		Material Retained, Captured or Recovered	
	Contaminant or Pollutant	DESCRIPTION	DISPOSAL OR USE
	Swine Manure		Spread as Fertilizer
	(2) Point(s) of Waste Water Discharge <u>None</u>		
POLLUTION CONTROL FACILITY - ACCOUNTING DATA	Plans and Specifications Attached		Yes <input type="checkbox"/> No <input type="checkbox"/>
	(3)	Are contaminants (or residues) collected by the control facility?	Yes <input checked="" type="checkbox"/> No <input type="checkbox"/>
	(4)	Date installation completed <u>6/1/2017</u> status of installation on date of application <u>Complete</u>	
	(5)	a. FAIR CASH VALUE IF CONSIDERED REAL PROPERTY:	\$ <u>950,000</u>
		b. NET SALVAGE VALUE IF CONSIDERED REAL PROPERTY:	\$ <u>0</u>
		c. PRODUCTIVE GROSS ANNUAL INCOME OF CONTROL FACILITY:	\$ <u>0</u>
	d. PRODUCTIVE NET ANNUAL INCOME OF CONTROL FACILITY:	\$ <u>0</u>	
	e. PERCENTAGE CONTROL FACILITY BEARS TO WHOLE FACILITY VALUE:	% <u>12</u>	
Sec. F	The following information is submitted in accordance with the Illinois Property Tax Code, as amended, and to the best of my knowledge, is true and correct. The facilities claimed herein are "pollution control facilities" as defined in Section 11-10 of the Illinois Property Tax Code.		
SIGNATURE	<u><i>Raymond</i></u> Signature	<u><i>Agent</i></u> Title	
Sec. G	INSTRUCTIONS FOR COMPILING AND FILING APPLICATION		
	General: Separate applications must be completed for each control facility claimed. Do not mix types (water and air). Where both air and water operations are related, file two applications. If attachments are needed, record them consecutively on an index sheet.		
INSTRUCTIONS	Sec. A	Information refers to applicant as listed in the tax records and the person to be contacted for further details or for inspection of facilities. Define facility location by street address or legal description. A plat map location is required for facilities located outside of municipal boundaries. The property identification number is required.	
	Sec. B	Self-explanatory. Submit copies of all permits issued by local pollution control agencies. (e.g. MSD Construction Permit)	
	Sec. C	Refers to manufacturing processes or materials on which pollution control facility is used.	
	Sec. D	Narrative description of the pollution control facility, indicating that its primary purpose is to eliminate, prevent or reduce pollution. State the type of control facility. State permit number, date, and agency issuing permit. A narrative description and a process flow diagram describing the <u>pollution control facility</u> . Include a listing of each major piece of equipment included in the claimed fair cash value for real property. Include an <u>average</u> analysis of the influent and effluent of the control facility stating the collection efficiency.	
	Sec. E	List air contaminants, or water pollution substances released as effluents to the manufacturing processes. List also the final disposal of any contaminants removed from the manufacturing processes. List also the final disposal of any contaminants removed from the manufacturing processes. Item (1) - Refers to pollutants and contaminants removed from the process by the pollution control facility. Item (2) - Refers to water pollution but can apply to water-carried wastes from air pollution control facilities. Submit drawings, which clearly show (a) Point(s) of discharge to receiving stream, and (b) Sewers and process piping to and from the control facility. Item (3) - If the collected contaminants are disposed of other than as wastes, state the disposition of the materials, and the value in dollars reclaimed by sale or reuse of the collected substances. State the cost of reclamation and related expense. Item (4) - State the date which the pollution control facility was first placed in service and operated. If not, explain. Item (5) - This information is essential to the certification and assessment actions. This accounting data must be completed to activate project review prior to certification by this Agency.	
	Sec. F	Self-explanatory. Signature must be a corporate authorized signature.	
		Submit to: Illinois EPA P.O. Box 19276 Springfield, IL 62794-9276	Attention: Al Keller Permit Section Division of Water Pollution Control
			Attention: Donald E. Sutton Permit Section Division of Air Pollution Control

Section 1. Background and Site Information

Narrative

Sugar River Genetics, LLC is a swine multiplication facility located in Section 9, T.27N.-R.10.E, Winnebago County. Sugar River Genetics, LLC is completing a Comprehensive Nutrient Management Plan to stay up to date with current state and federal regulations. The site has a maximum capacity of 5522 swine over 55 pounds & 6160 swine under 55 pounds. Those pigs will be housed in five barns 100% of the time and they have the following dimensions:

<u>Building</u>	<u>Length (ft)</u>	<u>Width (ft)</u>	<u>Total depth (ft)</u>
New Gestation	200.9	158.5	10 ¹²
New Farrowing	286.1	175.3	2
Existing Barn 2	435.0	41.1	6
Existing Barn 1	435.0	41.1	6
Existing GDU	364.0	36.0	6

Manure from those pigs is stored underneath the floors in concrete pits. The farm produces approximately 6,000,000 gallons (based on Carthage System data) of manure per year. Based on the volume of storage that will be available, the farm will have 257 calculated days of storage. Normal mortalities are handled by composting them in a composter that is at the production area. A catastrophic mortality event would be handled by taking mortalities to a landfill or other approved method.

There are 747.2 spreadable acres in the CNMP and they are in continuous corn or a corn-soybean rotation. Manure will be applied by a custom applicator using an umbilical system with low disturbance shanks. Manure applications will be planned for the spring and fall. The planned tillage practice is to apply manure, then run a disc ripper in the fall, field cultivator in the spring, and plant corn on 30" rows. If manure is applied into soybean stubble, the manure is injected directly into the soybean stubble and then corn is planted.

RUSLE2 calculations were completed to predict soil erosion under the proposed systems to ensure that soil erosion on all fields is below "T". Soil samples will be updated on the ground in the fall of 2017. When the data is available, P index will be finished. Each field did have the P index ran without the soil analysis and the run is included in Section 5.

Sampling, Calibration and Other Statements

Manure Sampling

- Manure should be sampled at least one time per year during an application event. Manure samples must be collected, prepared, stored, and shipped according to the protocols and procedures outlined in: <http://www.extension.org/pages/16393/manure-sampling> or the Livestock Facilities Handbook, MWPS-18, Section 1.
- These results should be stored on a spreadsheet so historical trends can be observed.
- Manure testing analyses must be performed by laboratories successfully meeting the requirements and performance standards of the Manure Testing Laboratory Certification program (MTLCP) under the auspices of the Minnesota Department of Agriculture. <http://www2.mda.state.mn.us/webapp/lis/manurelabs.jsp>.

Soil Sampling

- Soil samples should be taken twice every 5 years in a method that is in accordance with the Illinois Agronomy Handbook. Soil samples in this plan were taken in 2014, so they will need to be updated in fall of 2017.
- Average values for P, K, and pH are reported in section 6.
- Soil test analyses must be performed by laboratories successfully meeting the requirements and performance standards of the Illinois Soil Testing Association Lab Accreditation Program (ISTA-LAP) or the North American Proficiency Testing Program-Performance Assessment Program (NAPT-PAP), or other NRCS approved programs that consider laboratory performance and proficiency to assure accuracy of soil test results
- If Phosphorous tests are trending to be near thresholds outlined in section 5.3, consider implementing a phosphorous drawdown strategy.
- Please refer to Illinois Agronomy Technical Note 23 for more information on soil sampling

STATE OF ILLINOIS

COUNTY OF SANGAMON

)
)
)
)
)

CERTIFICATE OF SERVICE

I, the undersigned attorney at law, hereby certify that I have served on the date of February 26, 2021, the attached **NOTICE OF FILING**, **APPEARANCE**, and **RECOMMENDATION**, upon the following persons by causing to be mailed a true copy thereof in an envelope duly addressed, bearing proper first class postage, and deposited in the United States mail at Springfield, Illinois:

Sugar River Genetics, LLC
303 N. 2nd St.
Carthage, IL 62321

Copies also provided electronically as follows:

Illinois Department of Revenue
via email at REV.PropTaxApp@illinois.gov
101 West Jefferson
P.O. Box 19033
Springfield, Illinois 62794

[Electronic Filing]

Illinois Pollution Control Board
Don Brown, Clerk
State of Illinois Center
100 West Randolph, Suite 11-500
Chicago, Illinois 60601
don.brown@illinois.gov

Respectfully submitted,

ILLINOIS ENVIRONMENTAL
PROTECTION AGENCY

By: /s/ Gabriel H. Neibergall
Gabriel H. Neibergall
Assistant Counsel
Division of Legal Counsel
Gabriel.Neibergall@illinois.gov

DATED: February 26, 2021

1021 N. Grand Ave. East
P.O. Box 19276
Springfield, IL 62794-9276
(217) 782-5544